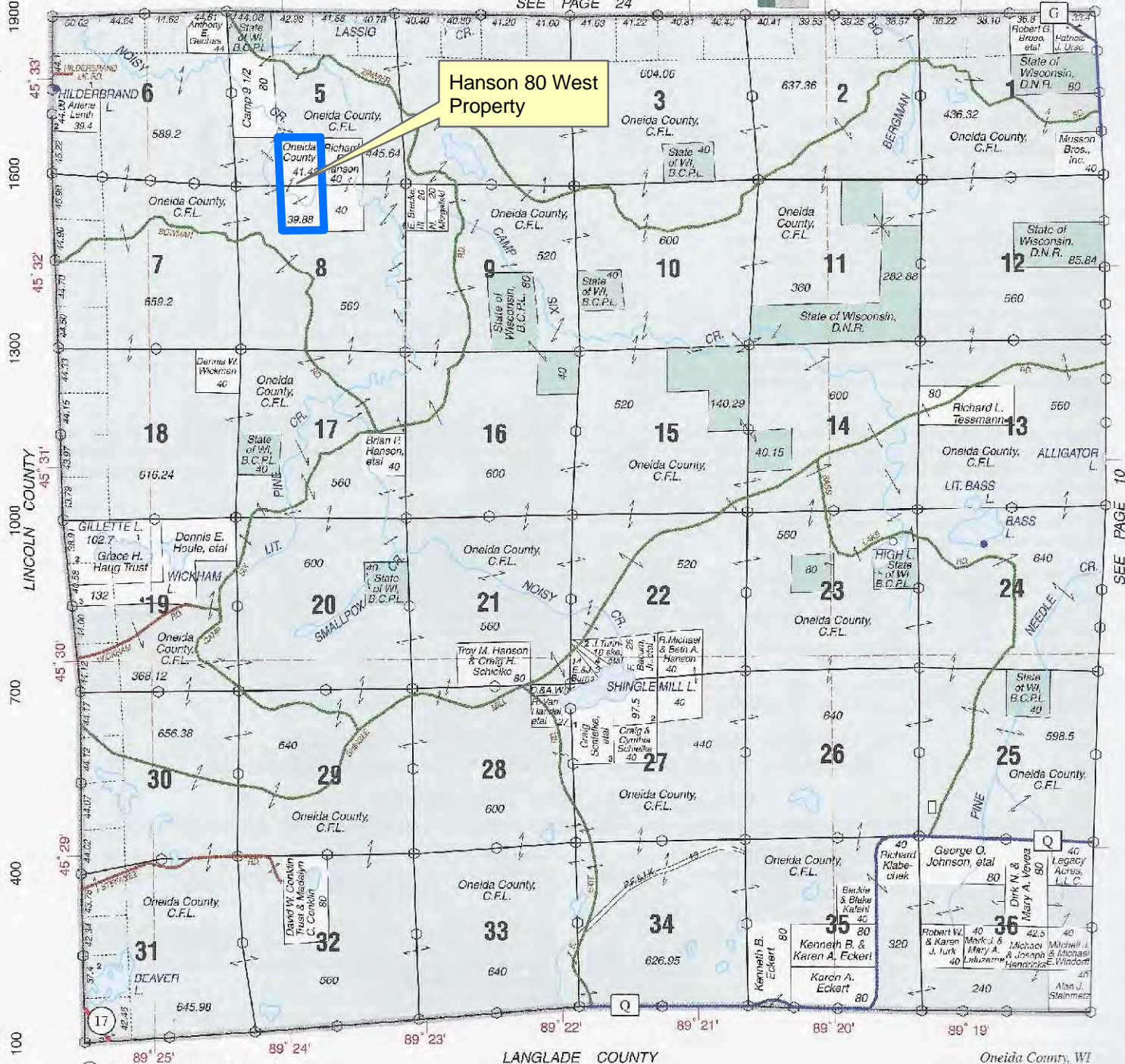


WEST PART ENTERPRISE

T.35N.-R.9E.

SEE PAGE 24

Hanson 80 West Property



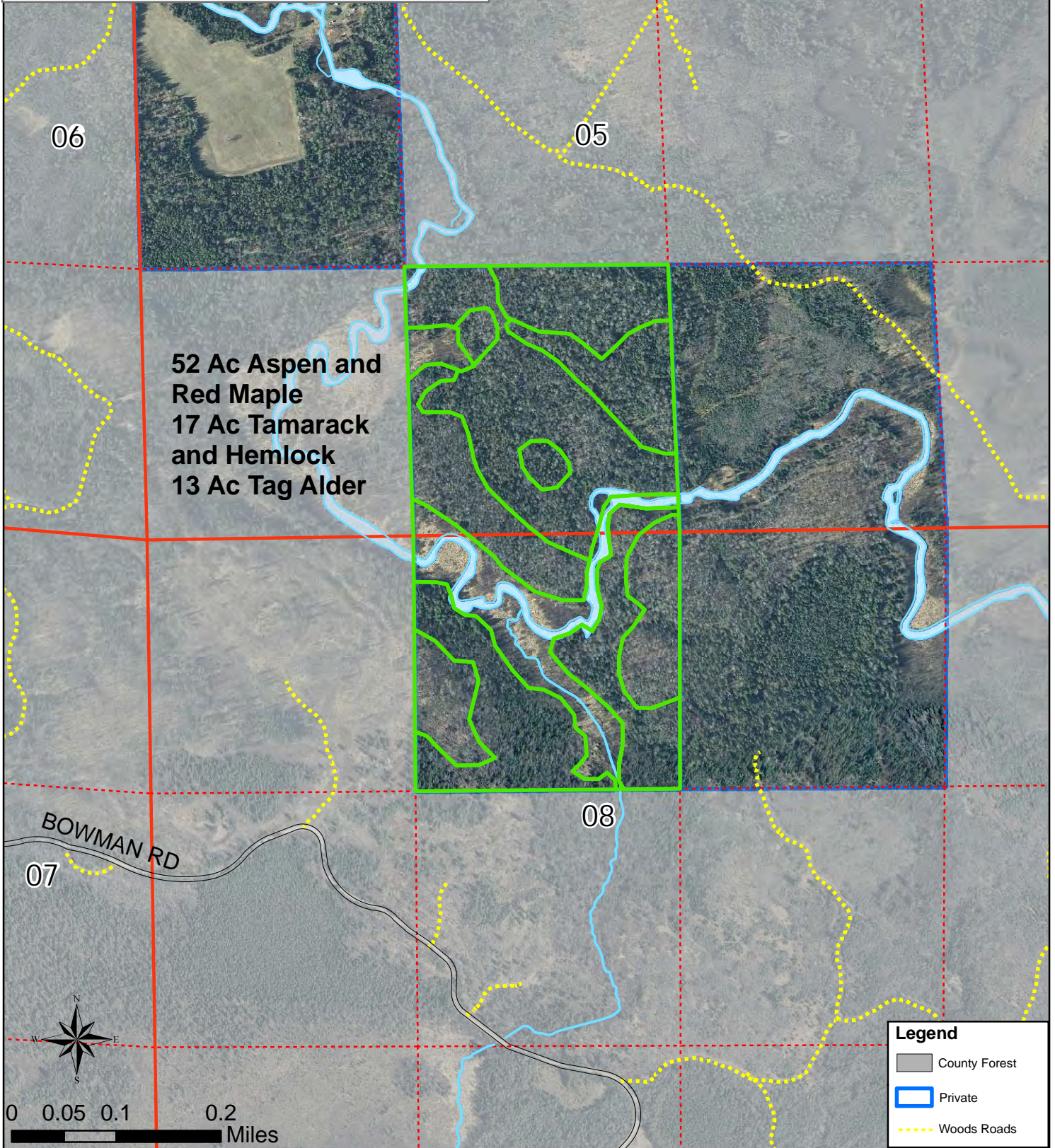
SEE PAGE 10

**ONEIDA COUNTY WISCONSIN
COUNTY FOREST ENTRY PROPOSAL**

EXHIBIT J

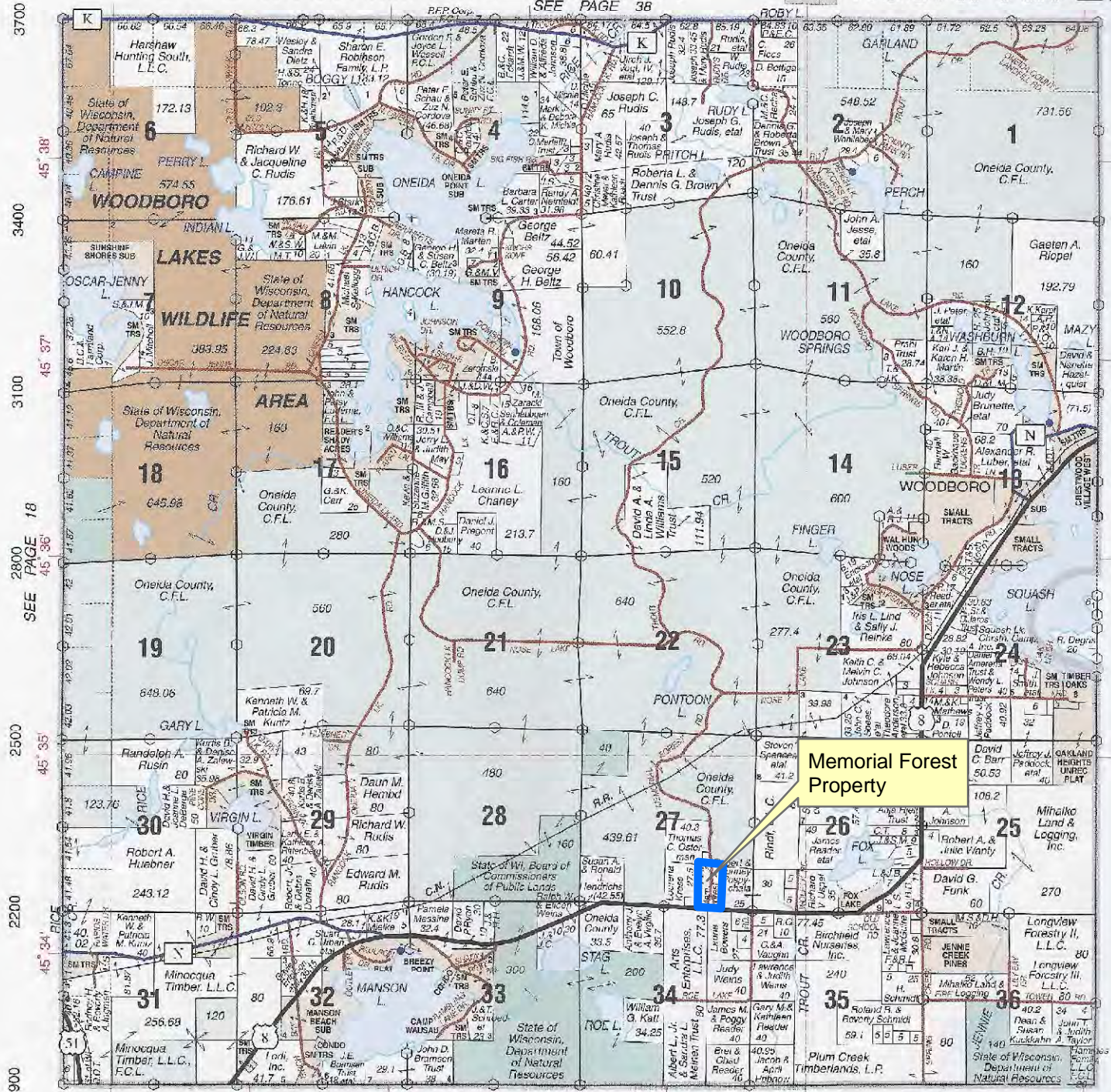
"HANSON 80 WEST PROPERTY"

**SE1/4 SW1/4 Section 5
NE1/4 NW1/4 Section 8
T 35 N R9E Town of Enterprise
Oneida Co. Wisconsin**



WOODBORO WEST PART CRESCENT T.36N.-R.7E.

SEE PAGE 38



Memorial Forest Property

SEE PAGE 22
CRESCENT TWP. → WOODBORO TWP.

89° 40' 89° 38' 89° 36' 89° 34' 89° 33'

© 2012 Rockford Map Publs., Inc. LINCOLN COUNTY Oneida County, WI

9100 8800 8500 8200 7900 7600 7300

ONEIDA COUNTY WISCONSIN COUNTY FOREST ENTRY PROPOSAL

Memorial Forest Property

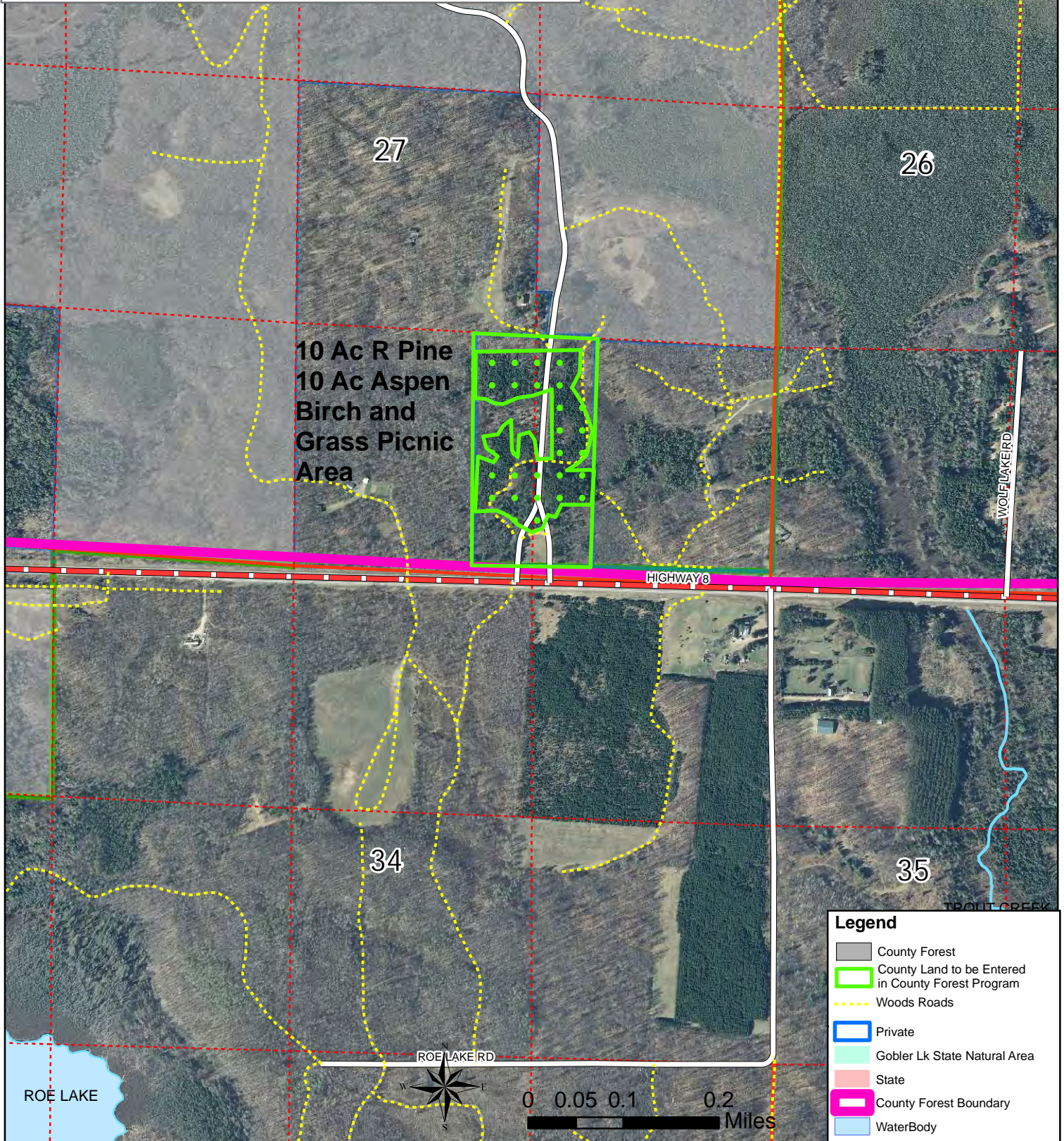
20 Rod Strip on either side of the 1/8 line

Section 27

T36N R5E Town of Woodboro

Oneida County Wisconsin

EXHIBIT L

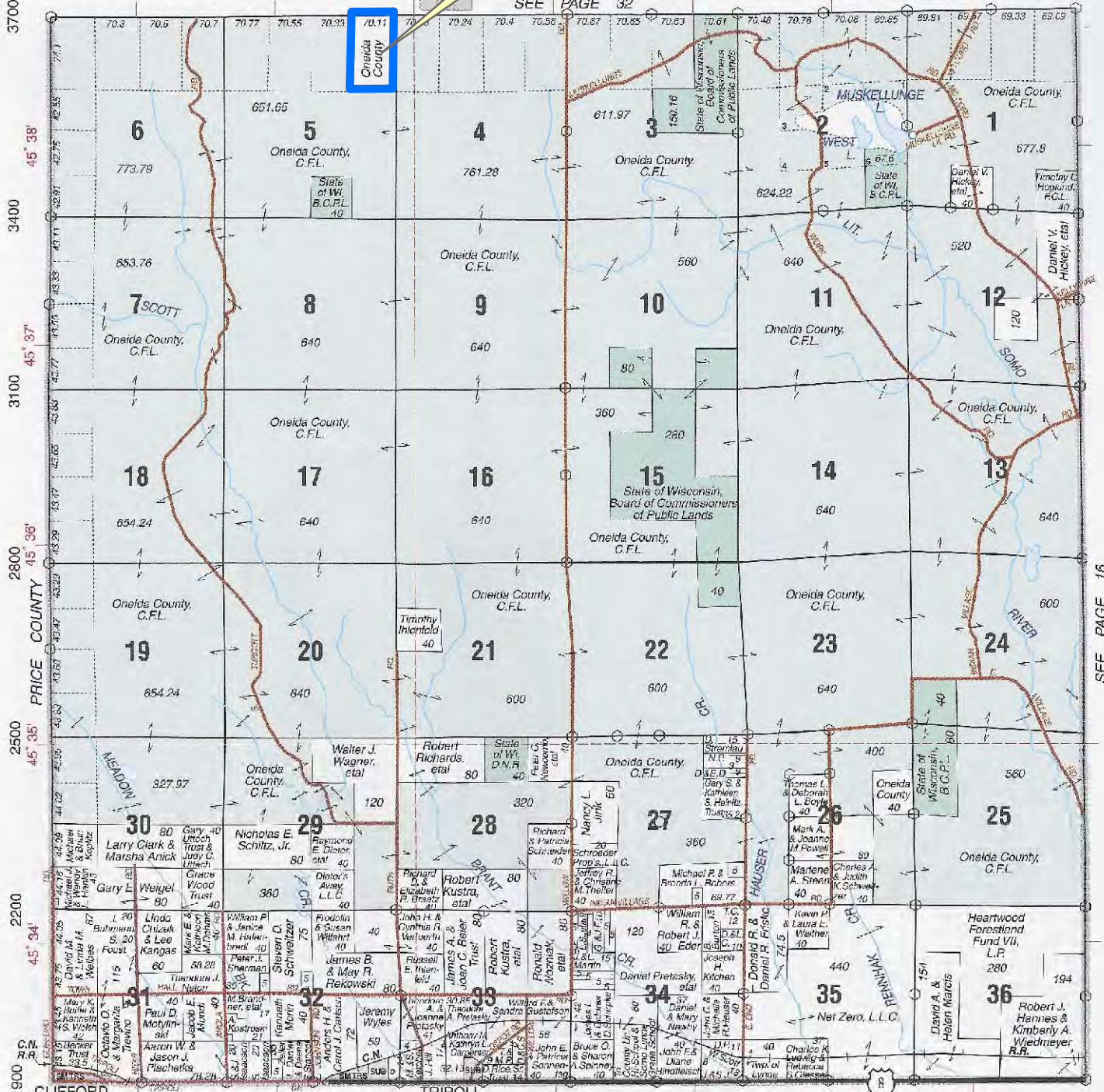


Correction 40 Property

SOUTH PART LYNNE

T.36N.-R.4E.

SEE PAGE 32



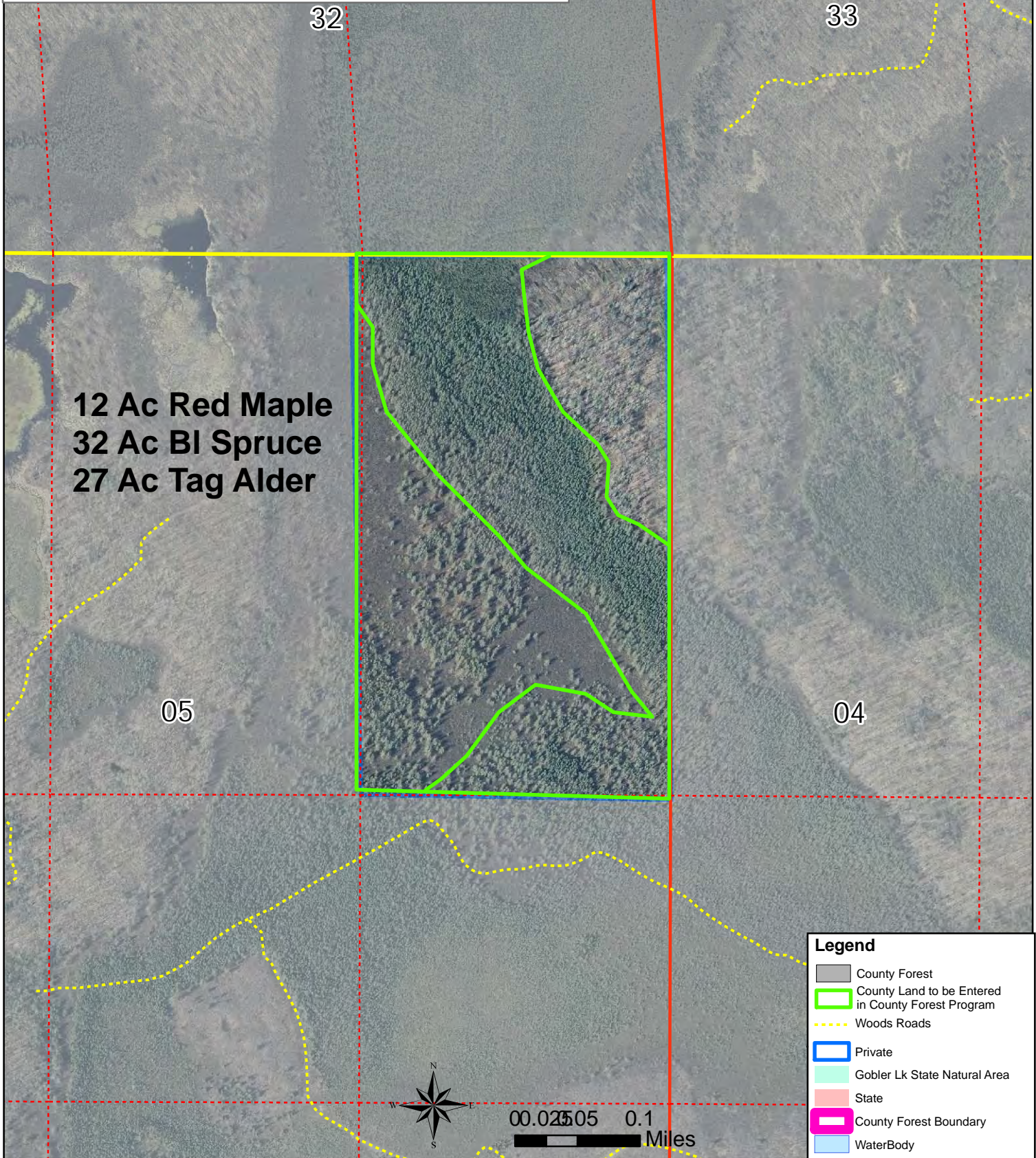
SEE PAGE 16

ONEIDA COUNTY WISCONSIN COUNTY FOREST ENTRY PROPOSAL

EXHIBIT N

Correction 40

NE1/4 NE1/4 Section 5
T36N R4E Town of Lynne
Oneida County Wisconsin



SOUTH PART LITTLE RICE

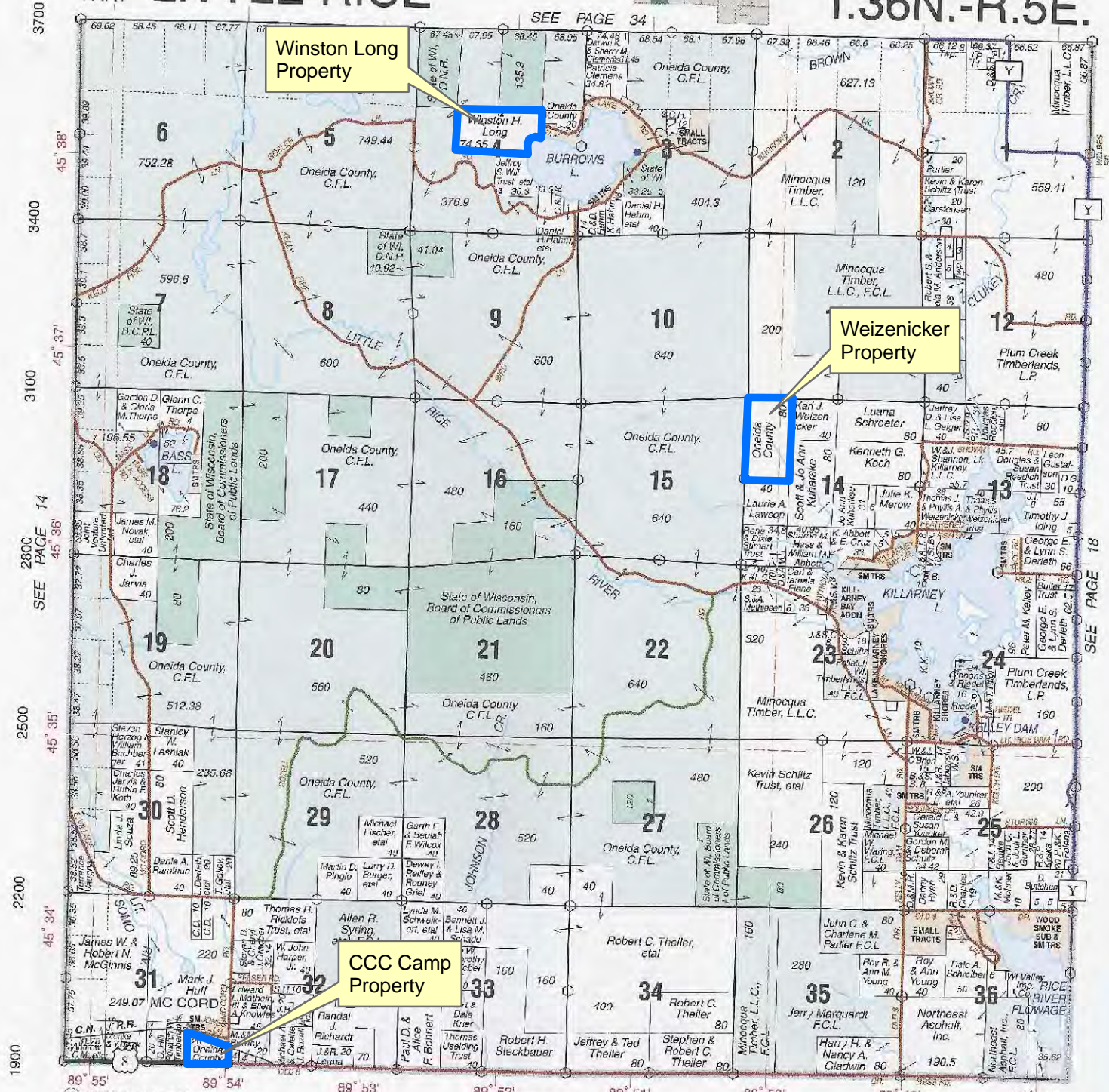
T.36N.-R.5E.

SEE PAGE 34

Winston Long Property

Weizenicker Property

CCC Camp Property



SEE PAGE 14

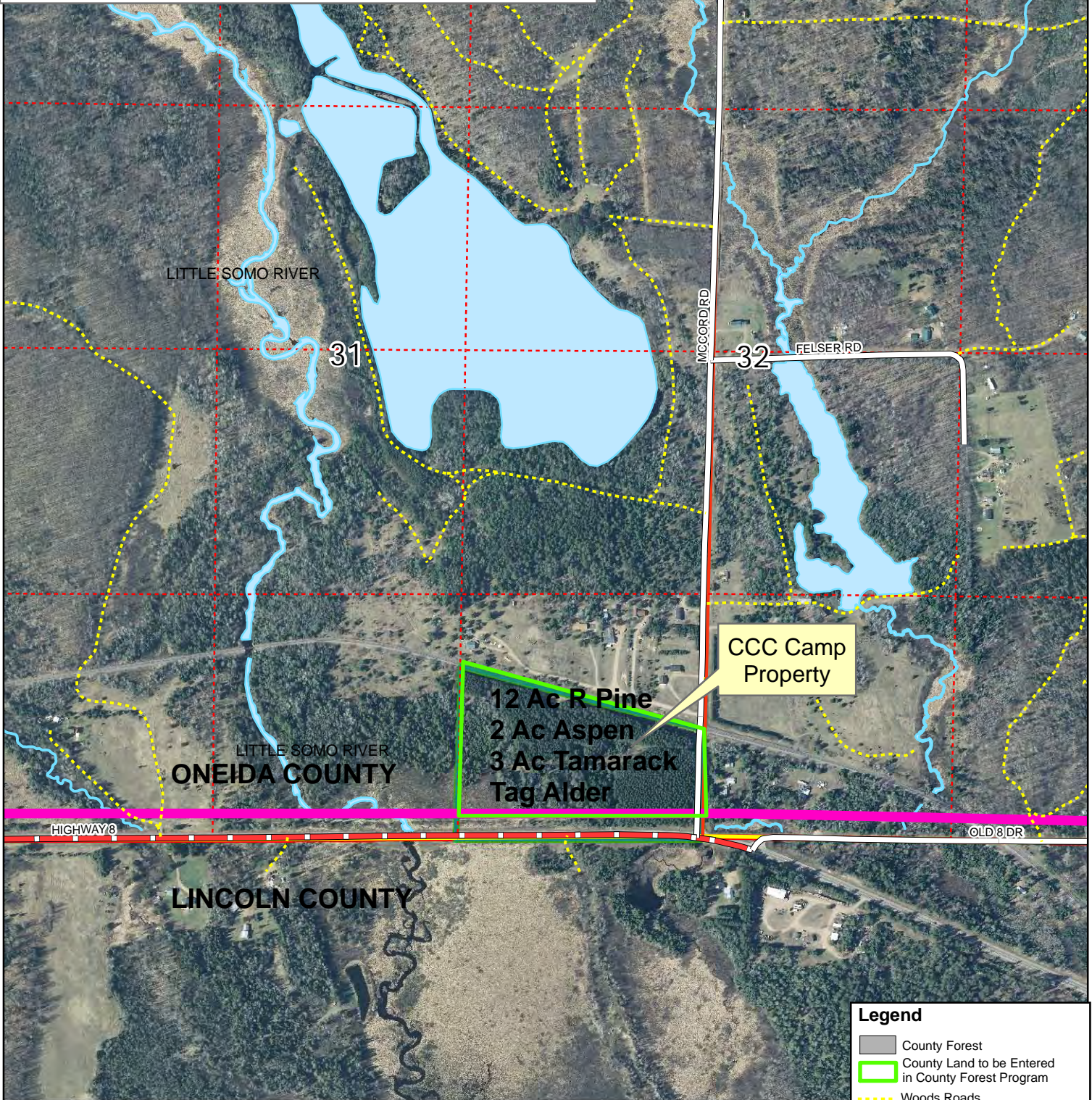
SEE PAGE 18

ONEIDA COUNTY WISCONSIN COUNTY FOREST ENTRY PROPOSAL

CCC Camp Property

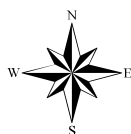
SE1/4 SE1/4 S of RR Section 31
T36N R5E Town of Little Rice
Oneida County Wisconsin

29 EXHIBIT P



Legend

- County Forest
- County Land to be Entered in County Forest Program
- Woods Roads
- Private
- Gobler Lk State Natural Area
- State
- County Forest Boundary
- WaterBody



0 0.05 0.1 0.2
Miles

ONEIDA COUNTY WISCONSIN COUNTY FOREST ENTRY PROPOSAL

Winston Long and Weizenicker Properties

SE1/4 NW1/4, SW1/4NE1/4 Section 4
W1/2 NW1/4 Section 14
T36N R5E Town of Little Rice
Oneida County Wisconsin

EXHIBIT Q

