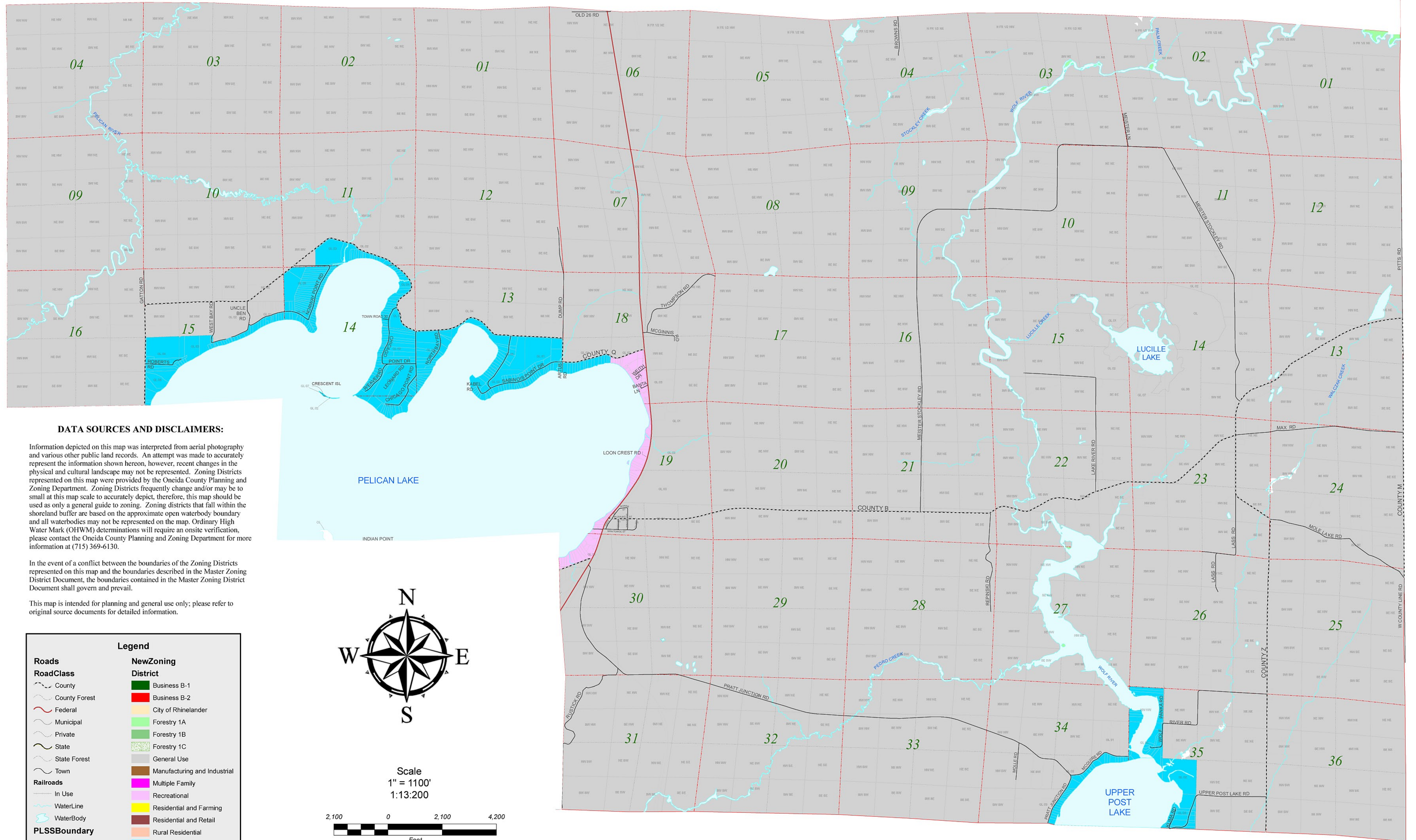


# Town of Schoepke Re-Zone Workmap



## DATA SOURCES AND DISCLAIMERS:

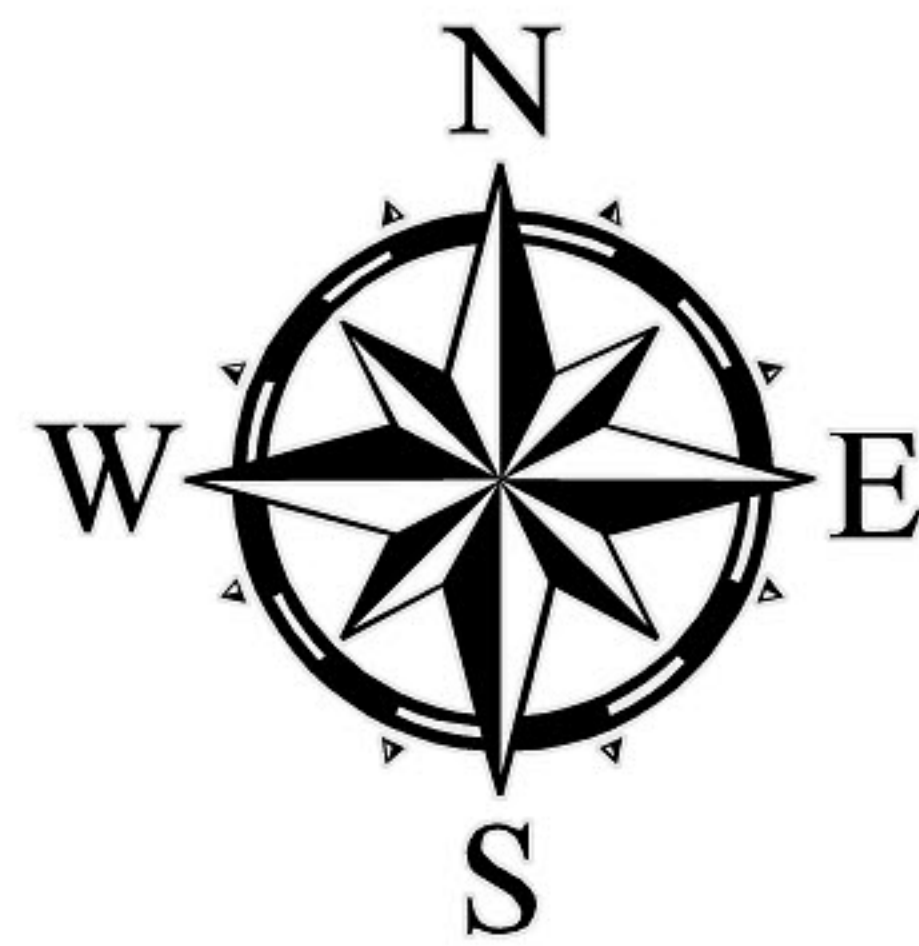
Information depicted on this map was interpreted from aerial photography and various other public land records. An attempt was made to accurately represent the information shown hereon, however, recent changes in the physical and cultural landscape may not be represented. Zoning Districts represented on this map were provided by the Oneida County Planning and Zoning Department. Zoning Districts frequently change and/or may be too small at this map scale to accurately depict, therefore, this map should be used as only a general guide to zoning. Zoning districts that fall within the shoreland buffer are based on the approximate open waterbody boundary and all waterbodies may not be represented on the map. Ordinary High Water Mark (OHWM) determinations will require an onsite verification, please contact the Oneida County Planning and Zoning Department for more information at (715) 369-6130.

In the event of a conflict between the boundaries of the Zoning Districts represented on this map and the boundaries described in the Master Zoning District Document, the boundaries contained in the Master Zoning District Document shall govern and prevail.

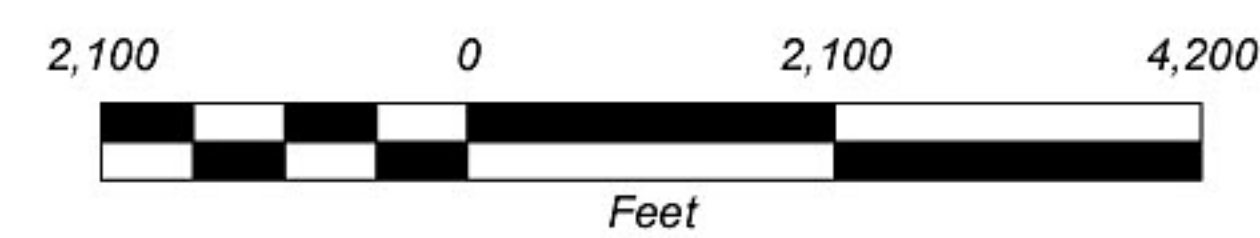
This map is intended for planning and general use only; please refer to original source documents for detailed information.

## Legend

Roads	New Zoning District
County	Business B-1
County Forest	Business B-2
Federal	City of Rhinelander
Municipal	Forestry 1A
Private	Forestry 1B
State	Forestry 1C
State Forest	General Use
Town	Manufacturing and Industrial
In Use	Multiple Family
WaterLine	Recreational
WaterBody	Residential and Farming
Aliquot	Residential and Retail
Quarter	Rural Residential
Section	Single Family
Township	Unzoned
GISpub.L. TaxDataParcels	



Scale  
1" = 1100'  
1:13:200



Oneida County Land Information Office  
Monday, February 20, 2012 3:14:06 PM  
I:\Projects\Land\Town\Special\_projects\SchoepkeRezone2.mxd