

County L
Lincoln County Line to US 51
Oneida County

Wisconsin Department of Transportation

Public Involvement Presentation

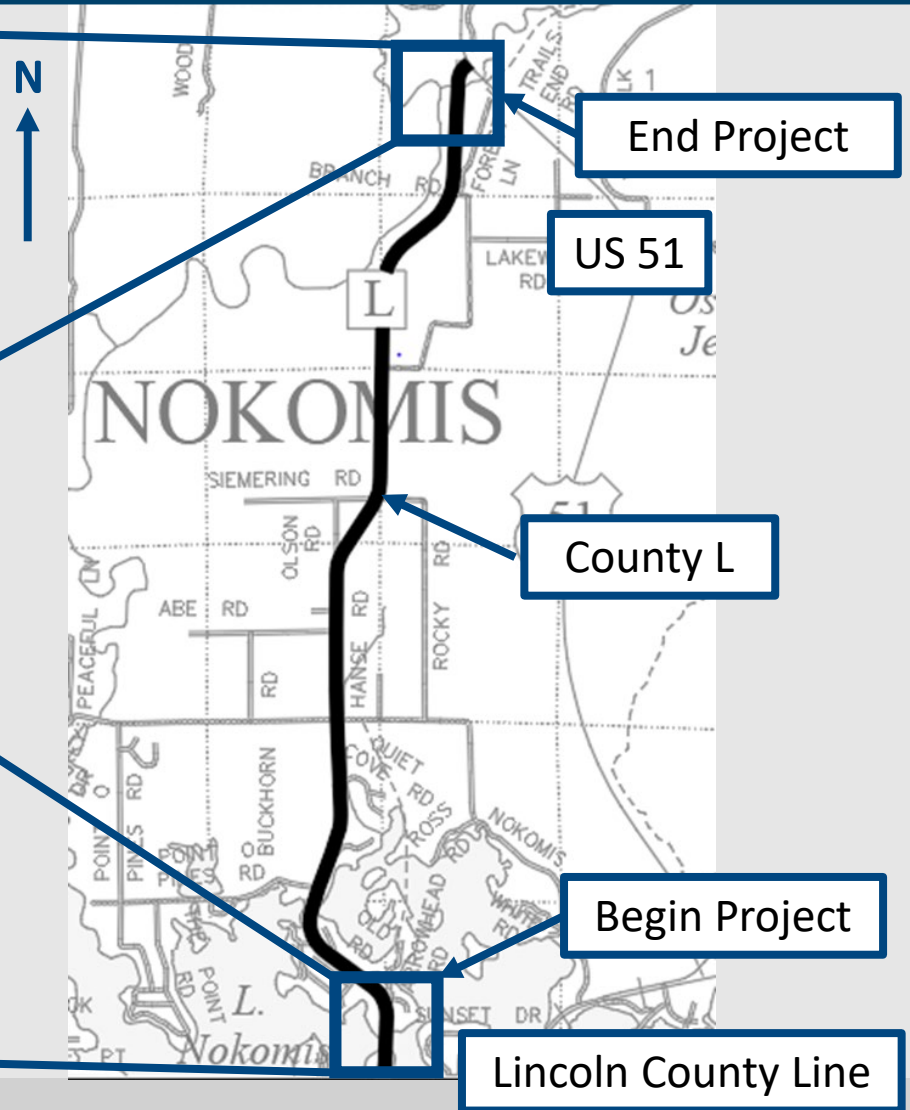
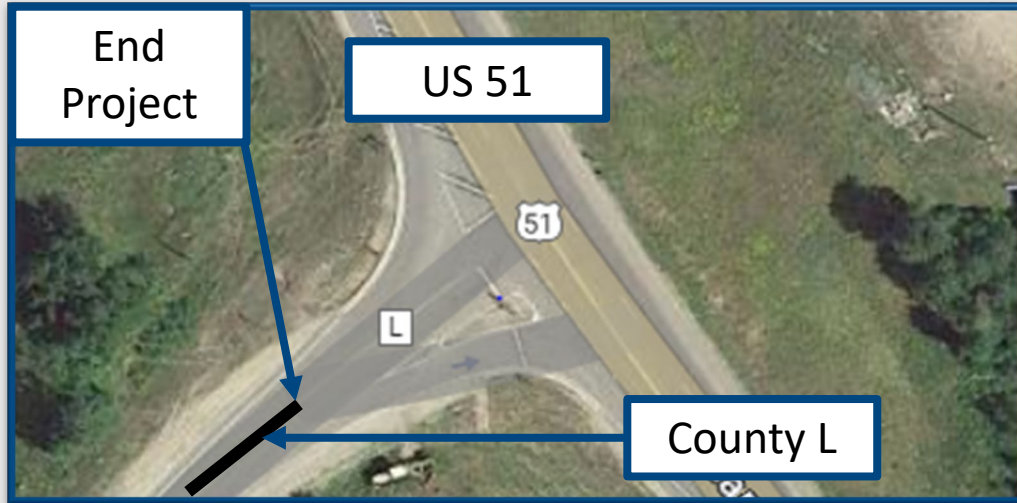
February 2023

Presentation Agenda

- Project Limits
- Project Purpose & Need
- Proposed Design Overview
- Recent Activities
- Upcoming Schedule
- Contact Information



What are the project limits?



What will happen to County L traffic?

- County L will remain open to traffic during construction.
- Anticipate single lane closures with flagging operations.

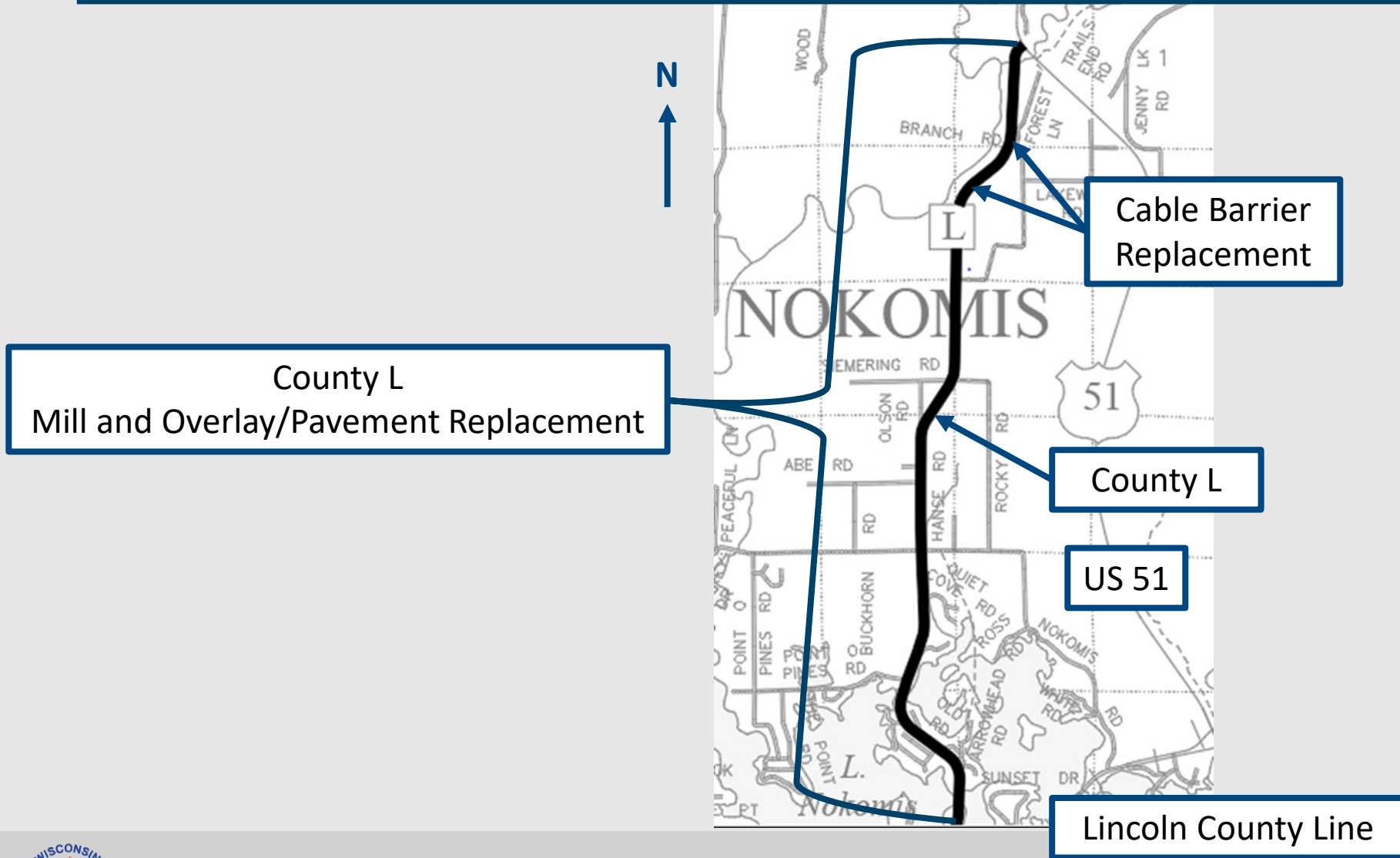


Why do we need this project?

Pavement Deterioration



What improvements are proposed?



Proposed Design Overview

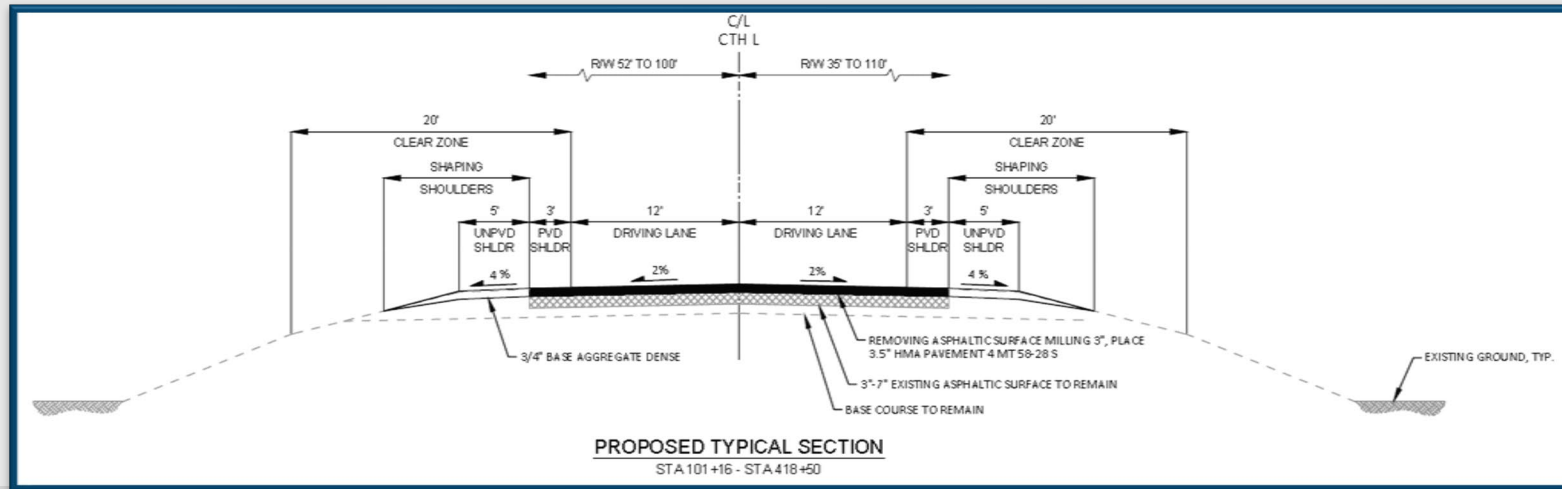
Typical Section – County L

• Pavement

- Mill 3-inches of existing pavement.
- Pave 3.5-inches of asphaltic surface on top of remaining lower mat

• Shoulders

- 3-foot paved
- 5-foot unpaved



Proposed Design Overview

Replace Cable Barrier

- Replace existing cable barrier at two locations along County L with MGS beam guard and Energy Absorbing Terminals (EAT's) meeting current safety standards.



Recent Activity

- 2022
 - Survey completed
- 2023
 - Initial Utility Coordination
 - Initial Department of Natural Resources & Cultural Resources Coordination
 - Preliminary Roadway Plans



What is next?

- Preliminary Design and Plans February 2023
- Environmental Report May 2023
- Design Study Report August 2023
- Final (90%) Plans April 2024
- PS&E August 2024
- Let Date January 2025
- Construction Spring/Summer 2025



Project Contact Information

Alex Hegeman

Oneida County Highway Commissioner

ahegeman@co.oneida.wi.us

(715) 369-6131

Erik Meyer, P.E.

Consultant Project Engineer

Westbrook Associated Engineers, Inc.

emeyer@westbrookeng.com

P.O. Box 429

Spring Green, WI 53588

(608) 588-7866



Thank you for your time.

If you have any comments, questions, or concerns, please send Erik Meyer with Westbrook Associated Engineers, Inc. an email, give him a call, or return the comment form in the mail.

