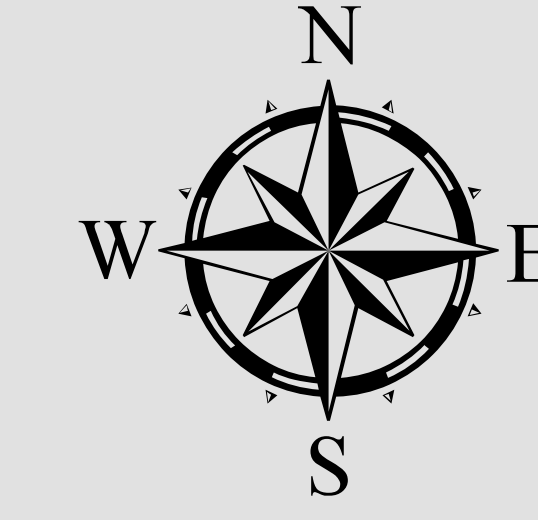


PSC Base Project and County Facilities

VILAS COUNTY



0 0.5 1 2 Miles

PRICE COUNTY

FOREST COUNTY

LINCOLN COUNTY

LINCOLN COUNTY

LANGLADE COUNTY

Supervisor Districts

- 01, Connor Showalter, 715-966-2560
- 02, Tom Koby, 715-369-2618
- 03, Lorenz Newman, 715-529-0622
- 04, Steven Scherer, 715-369-1664
- 05, Steve Fisher, 715-369-3998
- 06, Gordon Oswald, 715-369-3776
- 07, Robert Briggs, 715-900-0493
- 08, Greg Gertzen, 715-369-8122
- 09, Dana Harris, 715-369-2200
- 10, Jim Winkler, 715-369-3388
- 11, Rob Jensen, 715-369-0562
- 12, Anthony Re, 715-405-9621
- 13, Gabriel Torral, 715-477-0001
- 14, Scott Holmstrom, 715-466-4467
- 15, Michael Roach, 715-466-1160
- 16, Michael Tremore, 715-466-2919
- 17, Billy Franz, 715-466-2664
- 18, Terry Rubin, 715-466-6151
- 19, Robert Almekinders, 715-466-6151
- 20, Chris Schultz, 715-466-6151
- 21, Neil Cutting, 715-466-6151
- 22, Greg Gertzen, 715-466-6151

Facilities

- City Hall
- County Facilities
- Other

Public Safety

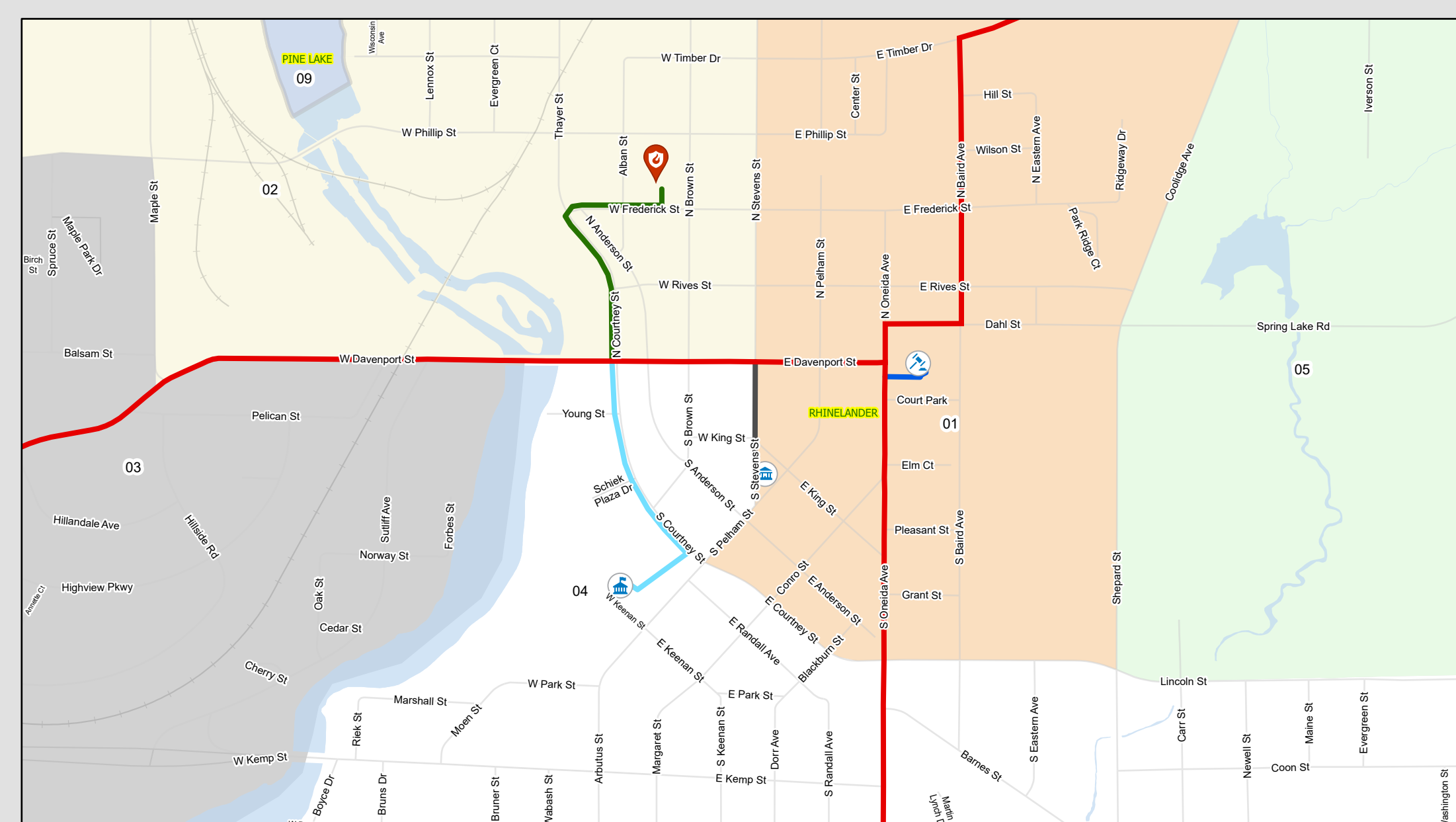
- Fire Department
- Highway
- Maintenance
- Solid Waste
- Town Hall
- ADRC
- Courthouse
- County
- County Forest
- Federal
- Private
- State
- State Street
- Town
- Waterbody

RoadSubType

- County
- County Forest
- Federal
- Private
- State
- State Street
- Town
- Waterbody

Bug Tussel Tower

- Proposed
- Existing
- Bug Tussel Proposed
- Bug Tussel Existing



Type	Name	Miles	Cost	Address Count
Public Safety	Oneida County Courthouse	0.05	\$3,750	
Public Safety	Oneida County Sheriff's Office	0.26	\$19,500	1
Public Safety	Rhinelandier Aspirus EMR 1 Tower Site	0.86	\$64,500	34
Public Safety	Sugar Camp Tower Site	0.14	\$10,500	1
Public Safety	Monroe Tower Site	0.27	\$20,250	
Public Safety	Hocking County East	3.79	\$284,250	218
Public Safety	Sugar Camp Ambulance	0.05	\$3,750	0
Public Safety	Pine Lake Fire Department - Town Hall	0.07	\$5,250	207
Public Safety	Willow Tower Site	0.14	\$10,500	0
Public Safety	Squirrel Hill Tower Site	3.09	\$231,750	2
Public Safety	Nokomis Tower Site	1.5	\$112,500	30
Public Safety	Minocqua Tower Site	1	\$75,000	83
Public Safety	Lake Tomahawk Tower Site	0.1	\$7,500	0
Public Safety	Woodruff EMR 1 Tower Site	0.53	\$39,750	78
County Facilities	Oneida County Solid Waste	0.75	\$56,250	0
County Facilities	Oneida County Highway	0.33	\$24,750	0
County Facilities	Oneida County ADRC	0.3	\$22,500	46
County Facilities	Oneida County Highway - Minocqua	0.09	\$6,750	0
County Facilities	Minocqua Zoning	1.29	\$96,750	220
County Facilities	County Hwy Monico	0.25	\$18,750	0
County Facilities	County Hwy Three Lakes	0.21	\$15,750	0
County Facilities	County Forestry Shop	0.31	\$23,250	6
County Facilities	Human Services Center	0.04	\$3,000	0
County Facilities	Koronia Residential Treatment Center	0.08	\$6,000	0
Town Public Safety	Lynne Fire Department	0.02	\$1,500	0
Town Public Safety	Minocqua Fire Station 2	5.57	\$417,750	136
Town Public Safety	Little Rice Fire - Town Hall	5.55	\$416,250	42
Town Public Safety	Hazelhurst Town Hall - Fire Department	0.09	\$6,750	10
Town Public Safety	Cassian Town Hall - Fire Department	0.16	\$12,000	0
Town Public Safety	Minocqua Fire Department	0.92	\$69,000	379
Town Public Safety	Woodruff Town Hall - Fire - Police	0.81	\$45,750	26
Town Public Safety	Lake Tomahawk Fire Department	0.05	\$3,750	0
Town Public Safety	Newbold Fire Department #2 - Maintenance Building	3.94	\$295,500	71
Town Public Safety	Newbold Fire Department #1 - Town Hall	0.1	\$7,500	0
Town Public Safety	Sugar Camp Town Hall - Fire Department	0.23	\$17,250	0
Town Public Safety	Pelican Fire - Town Hall	0.92	\$69,000	61
Town Public Safety	Monico Fire	0.07	\$5,250	3
Town Public Safety	Three Lakes Fire #2	3.9	\$292,500	198
Town Public Safety	Three Lakes PD	0.25	\$18,750	0
Town Public Safety	Stella Fire - Town Hall	4.65	\$348,750	63
Town Public Safety	Three Lakes Fire	0.22	\$16,500	0
Town Public Safety	Pine Lake Fire #2	2.06	\$154,500	52
Town Public Safety	Crescent Fire	2.9	\$217,500	60
Town Public Safety	Nokomis Fire	0.8	\$60,000	12
Town Public Safety	Minocqua PD	0.02	\$1,500	0
Town Public Safety	Rhinelandier Fire-PD	0.29	\$21,750	98
Town Hall	Lynne Town Hall	0.02	\$1,500	0
Town Hall	Nokomis Town Hall	0.63	\$47,250	28
Town Hall	Lake Tomahawk Town Hall	0.08	\$6,000	6
Town Hall	Woodborn Town Hall	1.11	\$83,250	4
Town Hall	Rhinelandier City Hall	0.13	\$9,750	24
Town Hall	Piehl Town Hall	0.21	\$15,750	1
Town Hall	Enterprise Town Hall	4.76	\$357,000	157
Town Hall	Schoepke Town Hall	0.02	\$1,500	0
Town Maintenance	Lynne Maintenance Building	0.04	\$3,000	0
Town Maintenance	Hazelhurst Maintenance Building	0.04	\$3,000	0
Town Maintenance	Cassian Maintenance Building	0.83	\$62,250	20
Town Maintenance	Minocqua Maintenance Building	0.05	\$3,750	0
Town Maintenance	Pine Lake Maintenance Building	0.02	\$1,500	0
Town Maintenance	Sugar Camp Maintenance Building	0.01	\$750	0
Town Maintenance	Three Lakes Maintenance Shop	0.33	\$24,750	22
Town Maintenance	Crescent Maintenance Shop	7.53	\$564,750	259
Town Maintenance	Pelican Town Shop	1.66	\$124,500	50
Residential	CTH C	6.3	\$472,500	147
Residential	County Road D	24.78	\$1,858,500	507
Other	EMR Schoepke Tower Site	5.99	\$449,250	36

Type	Cost	Miles	Address Count
Public Safety	\$888,750	11.85	655
County Facilities	\$273,750	3.65	272
Town Public Safety	\$2,499,000	33.32	1,167
Town Hall	\$512,250	6.83	196
Town Maintenance	\$788,250	10.51	351
Residential	\$2,331,000	31.08	654
Other	\$449,250	5.99	36
Total	\$7,742,250	103.23	3,331