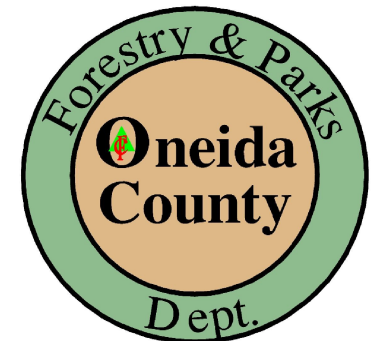
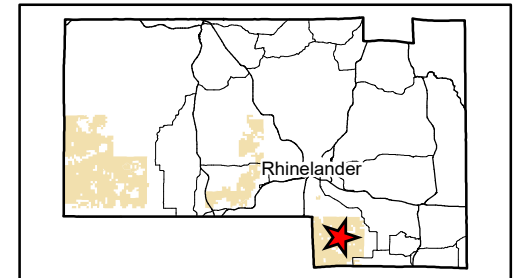


# ENTERPRISE BLOCK ONEIDA COUNTY FOREST



ONEIDA COUNTY FORESTRY  
PO BOX 400 - COURTHOUSE  
RHINELANDER, WI 54501  
(715) 369-6140

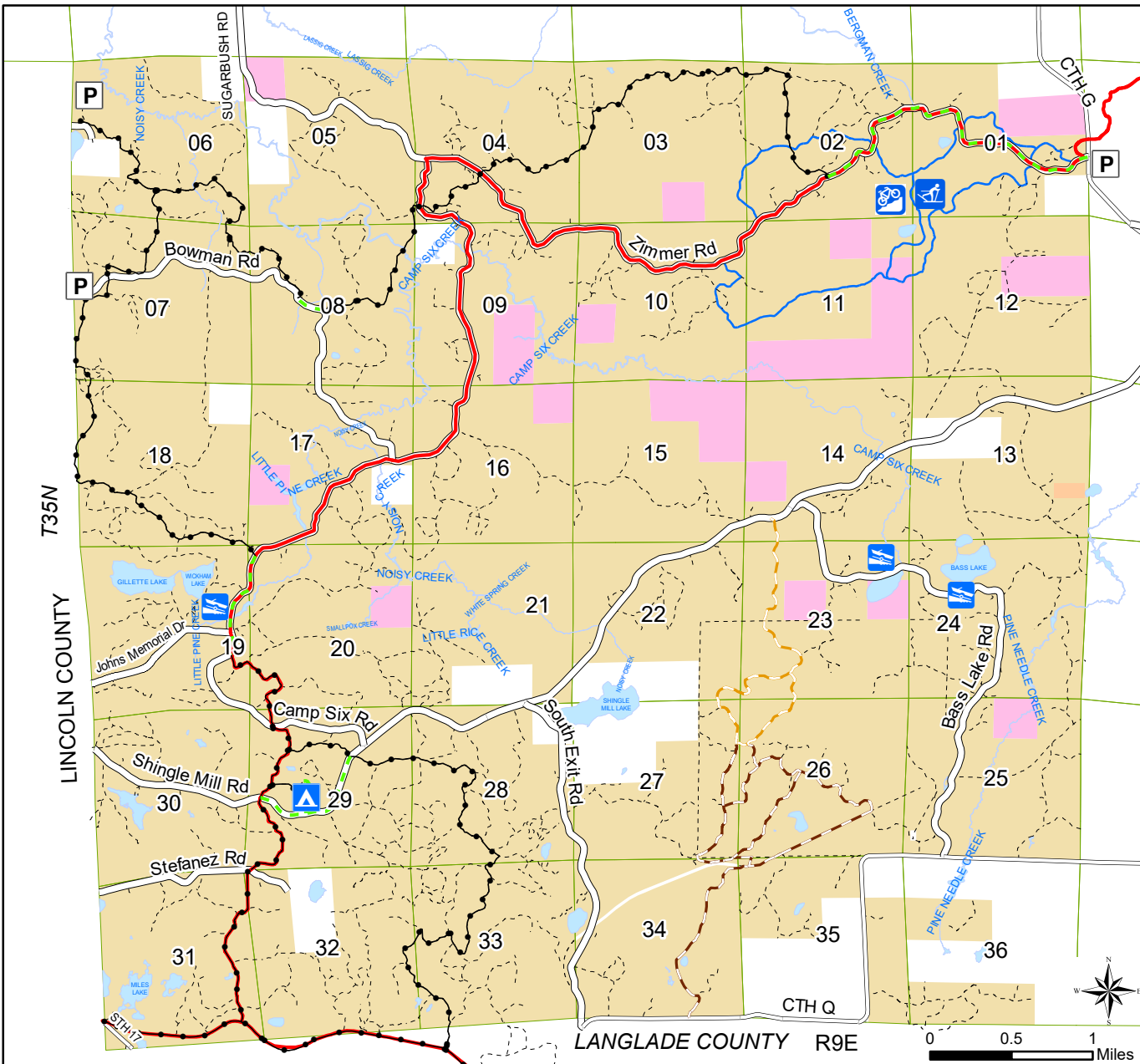


The Enterprise block of the Oneida County Forest is located in the southeast part of the County. This block consists of approximately 20,000 acres. Hardwood, aspen, oak, balsam fir and spruce are the predominant cover types. There is very little private property within this block. A network of County Forest roads provides access to most of the area.

The topography of the area ranges from level to quite steep. Ridges and ravines are numerous in this block. Several small creeks which are designated trout streams, along with several small lakes are found in this block. There are numerous large swamps, marshes and wetlands.

The Enterprise Campground, an ATV trail, a snowmobile trail and the Enterprise Primitive Ski/Bike/Snowshoe trail reside within this block. The Enterprise primitive skiing and fat tire biking trails are located in the northeast corner of this block.

Many game and non-game wildlife species are common in the area. Among these are deer, bear, fishers, hawks and grouse. Active forest management has created a variety of cover types that support wildlife along with providing access to the forest.



County Forest	Campground	Public Roads
State Property	Boat Landing	Logging Roads
Private Land	Ski/Snowshoe Trail	Snowmobile Trails
Waterbody	Fat Tire Bike Trail	Off Road ATV Trails
Parking Lot	Ski/Snowshoe/Bike Trail	ATV Road Routes
		Disabled Hunter Access Trail
		Hunter Hiking Trail
		Section Lines

**DATA SOURCES AND DISCLAIMERS:**  
Information depicted on this map was interpreted from aerial photography and various other public land records. An attempt was made to accurately represent the information shown hereon, however, recent changes in the physical and cultural landscape may not be represented. This map is intended for planning and general use only. Please refer to original source documents for detailed information. Please contact the Oneida County Forestry Office at (715)369-6140 if you discover any discrepancies on this map.